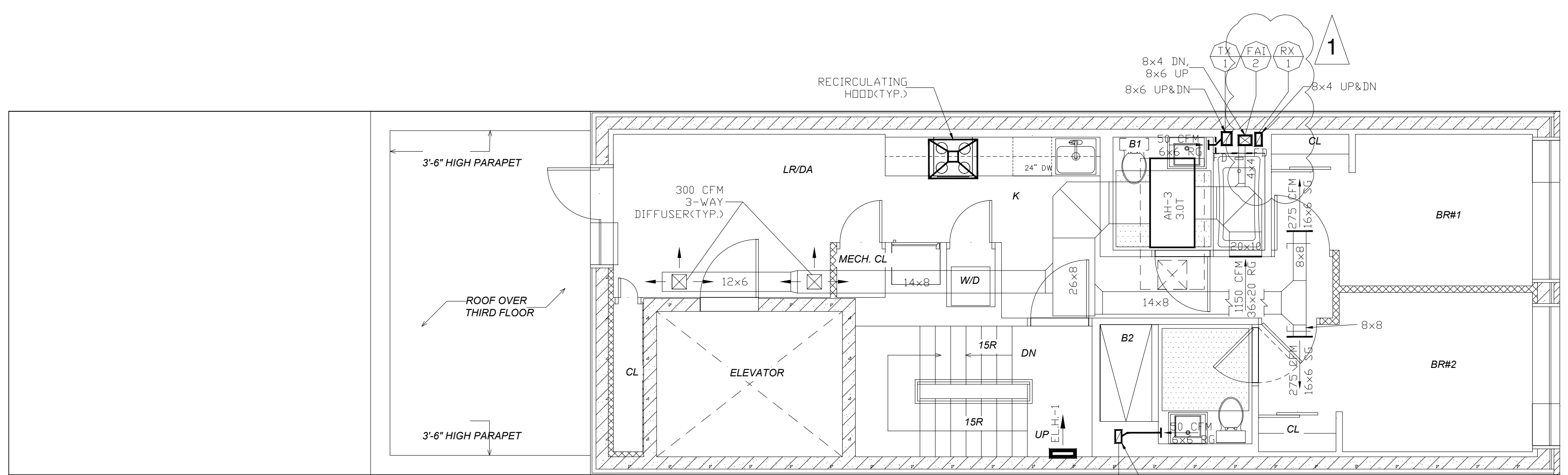
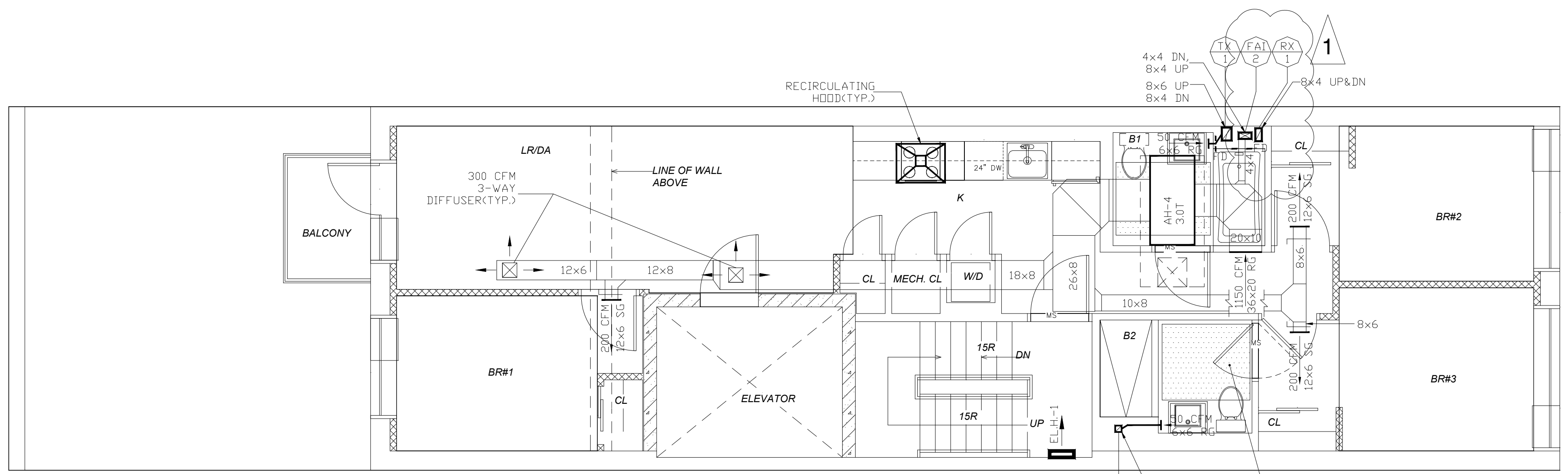


FIFTH FLOOR PLAN
SCALE: 1/4" = 1'-0"



FOURTH FLOOR PLAN
SCALE: 1/4" = 1'-0"



THIRD FLOOR PLAN
SCALE: 1/4" = 1'-0"

NUHEAT STANDARD MAT ELECTRIC FLOOR HEATING SYSTEM WITH HARMONY THERMOSTAT (7-DAY PROGRAMMABLE) MOD.#HM7110, 110V (TYP.)



THESE PLANS AND SPECIFICATIONS ARE EACH PART OF AN INTEGRATED DESIGN SYSTEM.
ANY MODIFICATION, ALTERATION, CHANGE, DELETION, ADDITION, OR SUBSTITUTION OF OR SPECIFICATIONS COULD RESULT IN PROPERTY DAMAGE, INJURY, OR EVEN DEATH, AND REQUIRES A FULL REVIEW OF THE ENTIRE SYSTEM BY A PROFESSIONAL ENGINEER.
ANY UNAUTHORIZED MODIFICATION OF THIS DOCUMENT MAY CONSTITUTE UNLICENSED PRACTICE AS A PROFESSIONAL ENGINEER AND MAY CONSTITUTE A CLASS 1E FLOOR (NY EDUCATION LAW §6512.1).
CONTRACTOR SHALL VERIFY ALL FIELD CONDITIONS AND DIMENSIONS AND BE RESPONSIBLE FOR FIELD FIT AND QUALITY OF WORK. NO ALLOWANCES SHALL BE MADE IN BEHALF OF THE CONTRACTOR FOR ANY ERROR OR NEGLECT ON HIS PART.

LEVIN
ENGINEERING PLLC

28 DOOLEY STREET, 2ND FLOOR
BROOKLYN, NY 11235
TEL (718) 332-2266; FAX (718) 332-2274
blevin@levin-engineering.com

| No. | Date MM.DD.YY | AMV | Description |
|-----|---------------|-----|-------------|
| 1. | 09.26.17 | AMV | |

PROJECT

11 AVENUE A
NEW YORK, NY 10009

THIRD-FIFTH FLOOR PLAN

| | |
|------------------------|---------------------------|
| SEAL & SIGNATURE | DATE (MM.DD.YY): 02.06.17 |
| DRAWN BY: K.N. | |
| CHK BY: B.L. | |
| DWG. No.: M-004.00 | |
| CAD FILE No.: 10 OF 13 | |

DOB BIS #:



ACCREDITED

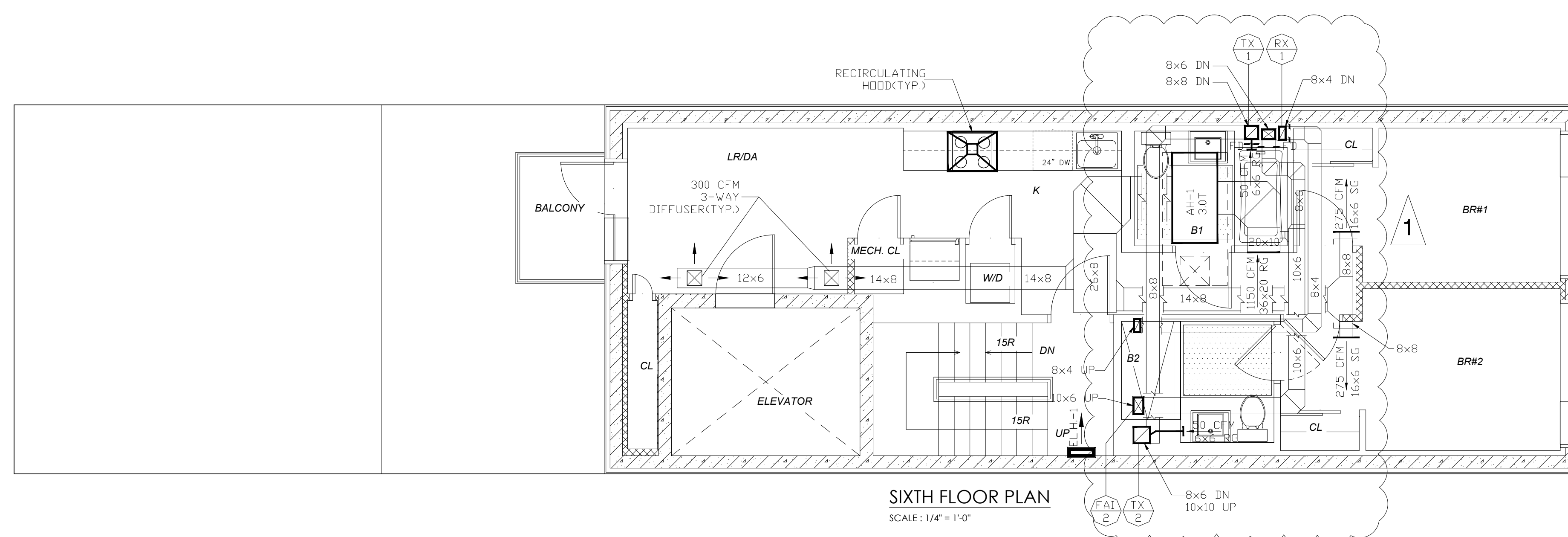
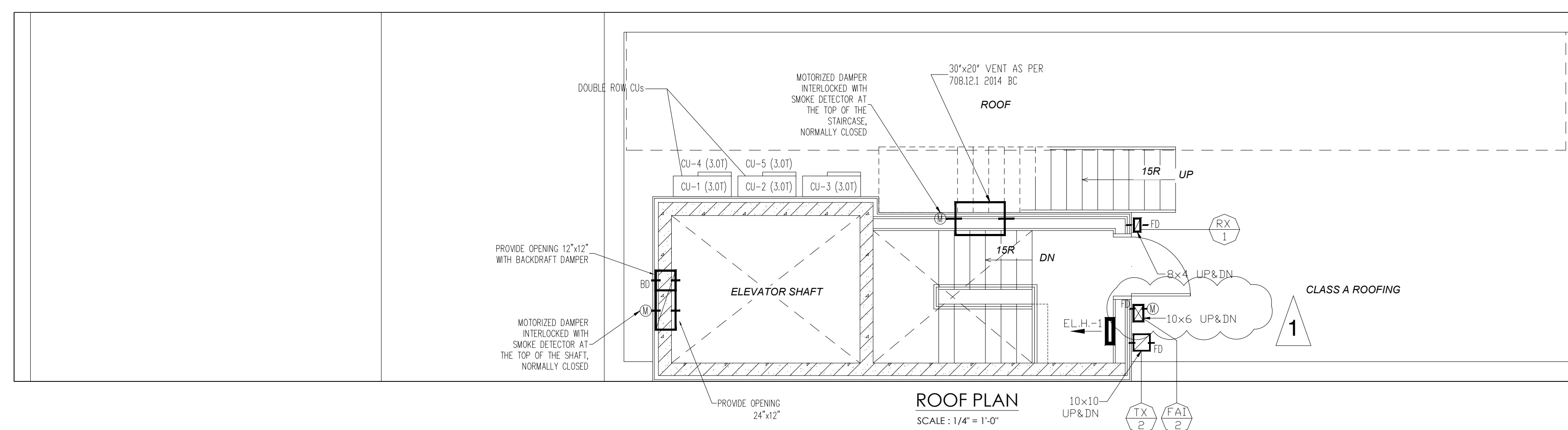
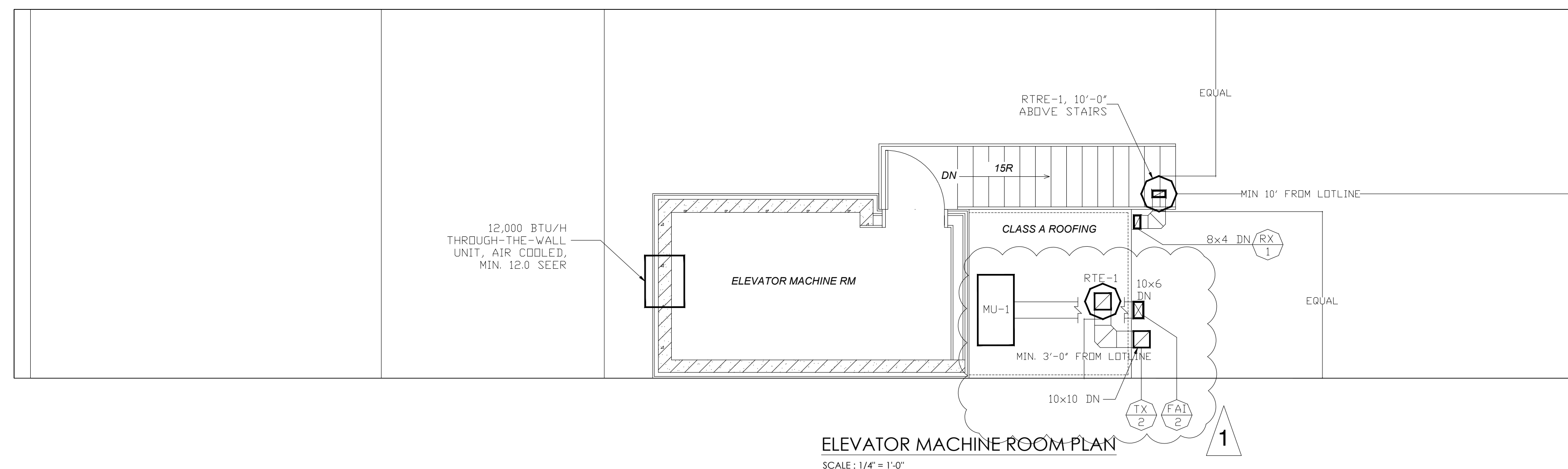
THESE PLANS AND SPECIFICATIONS ARE EACH PART OF AN INTEGRATED DESIGN SYSTEM. ANY MODIFICATION, ALTERATION, CHANGE, DELETION, ADDITION, OR SUBSTITUTION OF OR SPECIFICATION(S) COULD RESULT IN PROPERTY DAMAGE, INJURY, OR EVEN DEATH, AND REQUIRES A FULL REVIEW OF THE ENTIRE SYSTEM BY A PROFESSIONAL ENGINEER.

ANY UNAUTHORIZED MODIFICATION OF THIS DOCUMENT MAY CONSTITUTE UNLICENSED PRACTICE AS A PROFESSIONAL ENGINEER AND MAY CONSTITUTE A CLASS 1E VIOLATION (NY EDUCATION LAW §6512.1).

CONTRACTOR SHALL VERIFY ALL FIELD CONDITIONS AND DIMENSIONS AND BE RESPONSIBLE FOR FIELD FIT AND QUALITY OF WORK. NO ALLOWANCES SHALL BE MADE IN BEHALF OF THE CONTRACTOR FOR ANY ERROR OR NEGLIGENCE ON HIS PART.

LEVIN
ENGINEERING PLLC

28 DOOLEY STREET, 2ND FLOOR
BROOKLYN, NY 11235
TEL (718) 332-2266; FAX (718) 332-2274
blevin@levin-engineering.com



| No. | Date MM.DD.YY | Description |
|-----|---------------|-------------|
| 1. | 09.26.17 | AMV |

PROJECT

11 AVENUE A
NEW YORK, NY 10009

SIXTH FLOOR PLAN, ROOF
PLAN, ELEVATOR MACHINE
ROOM PLAN

| | | |
|------------------|------------------|-----------------|
| SEAL & SIGNATURE | DATE (MM.DD.YY): | 02.06.17 |
| | DRAWN BY: | K.N. |
| | CHK BY: | B.L. |
| | DWG. No.: | M-005.00 |
| | CAD FILE No.: | 11 OF 13 |

DOB BIS #:

| FAN UNITS SCHEDULE (NUTONE) | | | | | | | | | |
|--|-------|------------|-------|----------------|-----------------|-------|--------|------|--------------|
| CEILING MOUNTED EXHAUST FAN/HEATER/LIGHT | | | | | | | | | |
| N# | FAN # | TOTAL FANS | MOD.# | AIR FLOW (CFM) | STATIC PRESSURE | SONES | VHz | AMPS | WEIGHT (LBS) |
| 1 | TEF | 1 | 769HL | 100 | 0.10" | 2.0 | 120/60 | 14.0 | 13.8 |

| FAN UNITS SCHEDULE (PENN BARRY) | | | | | | | | | | |
|------------------------------------|-------|-------|----------------|-----------------|------|------|---------------------|--------------------|--------------|---------------------------|
| DOMEX CENTRIFUGAL ROOF EXHAUST FAN | | | | | | | | | | |
| N# | FAN # | MOD.# | AIR FLOW (CFM) | STATIC PRESSURE | RPM | H.P. | UNIT SUPPLY VOLTAGE | FULL LOAD AMP. (A) | WEIGHT (LBS) | REMARKS |
| 1 | RTR-1 | DX06B | 131 | 0.5" | 1105 | 1/4 | 230-1-60 | 3.2 | 35 | RECOMMENDED SPEED CONTROL |

| FAN UNITS SCHEDULE (PENN BARRY) | | | | | | | | | | |
|------------------------------------|-------|-------|----------------|-----------------|------|------|---------------------|--------------------|--------------|---------------------------|
| DOMEX CENTRIFUGAL ROOF EXHAUST FAN | | | | | | | | | | |
| N# | FAN # | MOD.# | AIR FLOW (CFM) | STATIC PRESSURE | RPM | H.P. | UNIT SUPPLY VOLTAGE | FULL LOAD AMP. (A) | WEIGHT (LBS) | REMARKS |
| 1 | RTE-1 | DX06B | 509 | 0.625" | 1437 | 1/4 | 115-1-60 | 5.8 | 35 | RECOMMENDED SPEED CONTROL |

| ELECTRIC HEATER (Qmark) | | | | | | | | | | |
|-------------------------|----------|---------------|----------------------|---------|---------|---------------------------|---------------------|----------|-------|--------------|
| N# | HEATER # | TOTAL HEATERS | HEATER TYPE | MOD.# | STOCK # | HEATING CAPACITY (BTU/Hr) | UNIT SUPPLY VOLTAGE | AMPERAGE | WATTS | WEIGHT (LBS) |
| 1 | EL.H-1 | 16 | BUILT-IN WALL HEATER | SEB2024 | 52K70 | 6,824 | 240/208 | 8.4 | 2000 | 10.1 |

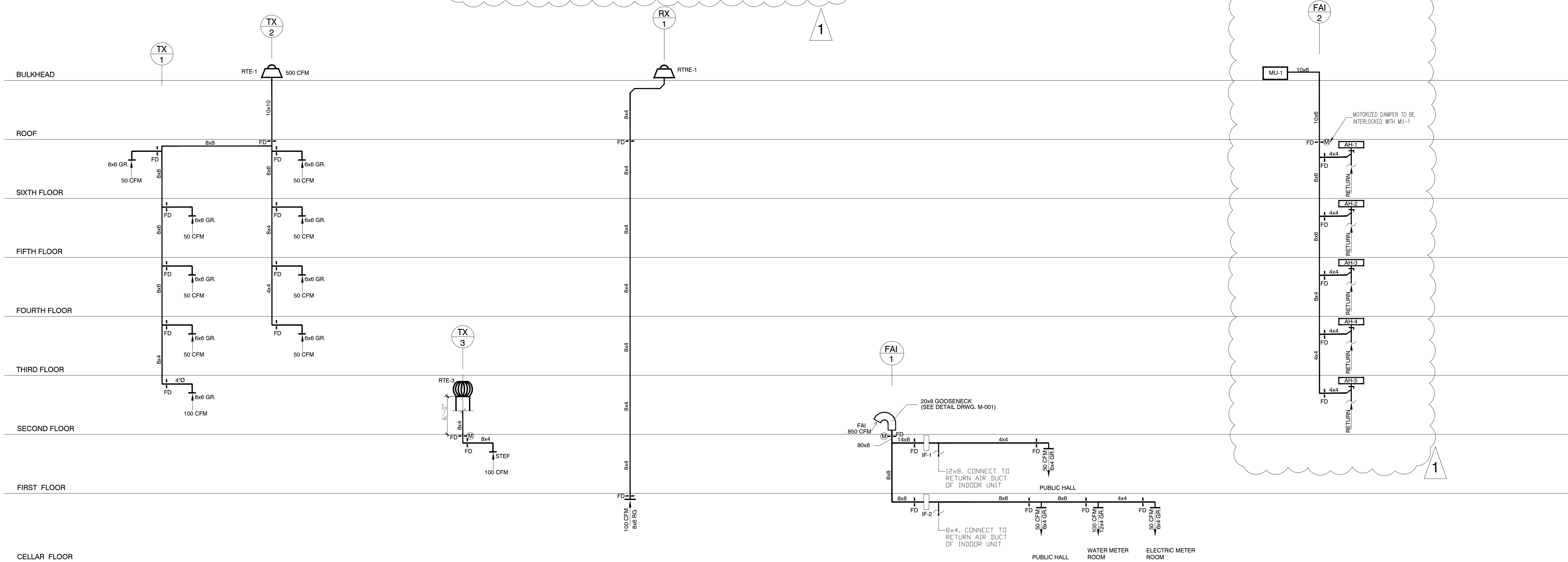
| FAN UNITS SCHEDULE (FANTECH) | | | | | | | | | | |
|--------------------------------|-------|--------|------------|----------------|-----------------|------|---------------------|------------------|--------------|-------------------------|
| INLINE CENTRIFUGAL FAN | | | | | | | | | | |
| N# | FAN # | MOD.# | TOTAL FANS | AIR FLOW (CFM) | STATIC PRESSURE | RPM | UNIT SUPPLY VOLTAGE | CURRENT AMP. (A) | WEIGHT (LBS) | REMARKS |
| 1 | IF-1 | FG12XL | 1 | 650 | 0.65" | 2582 | 120-1-60 | 3.01 | 21 | 100% SPEED CONTROLLABLE |
| 2 | IF-2 | FG6XL | 1 | 303 | 0.662" | 2526 | 120-1-60 | 1.31 | 12 | 100% SPEED CONTROLLABLE |

| TURBINE VENTILATOR SCHEDULE | | | | |
|------------------------------------|-------|-------|-----|--------------------------|
| AIR VENT INTERNALLY BRACED TURBINE | | | | |
| N# | FAN # | MOD.# | CFM | NECK 4 MI. WIND DIAMETER |
| 1 | RTE-3 | 4C850 | 90 | 4" |

| FAN UNITS SCHEDULE (PENN BARRY) | | | | | | | | | |
|-----------------------------------|-------|-------|----------------|-----------------|-----|------|---------------------|--------------------|--------------|
| MUFFAN ROOF SUPPLY FAN | | | | | | | | | |
| N# | FAN # | MOD.# | AIR FLOW (CFM) | STATIC PRESSURE | RPM | H.P. | UNIT SUPPLY VOLTAGE | FULL LOAD AMP. (A) | WEIGHT (LBS) |
| 1 | MU-1 | MU20 | 305 | 0.5" | 870 | 1/2 | 115-1-60 | 9.8 | 230 |

| AIR CONDITIONER UNITS SCHEDULE (DAIKIN) | | | | | | | | | | | | | |
|---|-------|--|-------------|----------------------------|----------------------|------------|----------------|---------------------|---------------------|----------------------|--------------|---|---------|
| SPLIT-TYPE AIR CONDITIONER (HEAT PUMP) | | | | | | | | | | | | | |
| N# | A/C # | A/C UNIT TYPE | MOD.# | COOLING CAPACITY TON (MBH) | HEATING CAPACITY MBH | EER (SEER) | AIR FLOW (CFM) | UNIT SUPPLY VOLTAGE | MIN. AMPACITY (AMP) | MAX. FUZE SIZE (AMP) | WEIGHT (LBS) | REMARKS | SERVING |
| 1 | AH-1 | BUILT-IN CONCEALED CEILING INDOOR UNIT | FXMQ36PBJU | 3.0 (36.0) | 40.0 | | 1130 | 208/230-1-60 | 2.9 | 15 | 102 | WITH BRO/IE73 REMOTE CONTROLLER | UNIT 5 |
| 2 | CU-1 | OUTDOOR UNIT | RXYMQ36PVJU | 3.0 (36.0) | 42.0 | 14.9 SEER | — | 208/230-1-60 | 27.0 | 30.0 | 283 | | |
| 3 | AH-2 | BUILT-IN CONCEALED CEILING INDOOR UNIT | FXMQ36PBJU | 3.0 (36.0) | 40.0 | | 1130 | 208/230-1-60 | 2.9 | 15 | 102 | WITH BRO/IE73 REMOTE CONTROLLER | UNIT 4 |
| 4 | CU-2 | OUTDOOR UNIT | RXYMQ36PVJU | 3.0 (36.0) | 42.0 | 14.9 SEER | — | 208/230-1-60 | 27.0 | 30.0 | 283 | | |
| 5 | AH-3 | BUILT-IN CONCEALED CEILING INDOOR UNIT | FXMQ36PBJU | 3.0 (36.0) | 40.0 | | 1130 | 208/230-1-60 | 2.9 | 15 | 102 | WITH BRO/IE73 REMOTE CONTROLLER | UNIT 3 |
| 6 | CU-3 | OUTDOOR UNIT | RXYMQ36PVJU | 3.0 (36.0) | 42.0 | 14.9 SEER | — | 208/230-1-60 | 27.0 | 30.0 | 283 | | |
| 7 | AH-4 | BUILT-IN CONCEALED CEILING INDOOR UNIT | FXMQ36PBJU | 3.0 (36.0) | 40.0 | | 1130 | 208/230-1-60 | 2.9 | 15 | 102 | WITH BRO/IE73 REMOTE CONTROLLER | UNIT 2 |
| 8 | CU-4 | OUTDOOR UNIT | RXYMQ36PVJU | 3.0 (36.0) | 42.0 | 14.9 SEER | — | 208/230-1-60 | 27.0 | 30.0 | 283 | | |
| 9 | AH-5 | BUILT-IN CONCEALED CEILING INDOOR UNIT | FXMQ36PBJU | 3.0 (36.0) | 40.0 | | 1130 | 208/230-1-60 | 2.9 | 15 | 102 | WITH BRO/IE73 REMOTE CONTROLLER | UNIT 1 |
| 10 | CU-5 | OUTDOOR UNIT | RXYMQ36PVJU | 3.0 (36.0) | 42.0 | 14.9 SEER | — | 208/230-1-60 | 27.0 | 30.0 | 283 | | |
| 11 | CU-6 | OUTDOOR UNIT | RXYQ120TTJU | 10.0 (114.0) | 129.0 | 12.1 EER | — | 208/230-3-60 | 36.3 | 45.0 | 528 | RETAIL STORE ON 1ST FLOOR, ACCESSORY STORAGE IN CELLAR (INDOOR UNITS BY TENANT) | |

*ALL INDOOR AIR HANDLERS ARE PROVIDED WITH REMOTE THERMOSTAT



TOILET EXHAUST RISER DIAGRAM
N.T.S.

REFUSE ROOM
EXHAUST RISER DIAGRAM
N.T.S.

FRESH AIR INTAKE RISER DIAGRAM
N.T.S.



ACCREDITED

THESE PLANS AND SPECIFICATIONS ARE EACH PART OF AN INTEGRATED DESIGN SYSTEM.
ANY MODIFICATION, ALTERATION, CHANGE, DELETION, ADDITION, OR SUBSTITUTION OF SPECIFICATIONS COULD RESULT IN PROPERTY DAMAGE, INJURY, OR EVEN DEATH, AND REQUIRES A FULL REVIEW OF THE ENTIRE SYSTEM BY A PROFESSIONAL ENGINEER.
ANY UNAUTHORIZED MODIFICATION OF THIS DOCUMENT MAY CONSTITUTE UNLICENSED PRACTICE AS A PROFESSIONAL ENGINEER AND MAY CONSTITUTE A CLASS 1E FELONY (NY EDUCATION LAW §6512.1).
CONTRACTOR SHALL VERIFY ALL FIELD CONDITIONS AND DIMENSIONS AND BE RESPONSIBLE FOR FIELD FIT AND QUALITY OF WORK. NO ALLOWANCES SHALL BE MADE IN BEHALF OF THE CONTRACTOR FOR ANY ERROR OR NEGLIGENCE ON HIS PART.

LEVIN
ENGINEERING PLLC

28 DOOLEY STREET, 2ND FLOOR
BROOKLYN, NY 11235
TEL (718) 332-2266; FAX (718) 332-2274
blevin@levin-engineering.com

| | | |
|-----|-----------------|-------------|
| 1. | 09.26.17 | AMV |
| No. | (Date MM.DD.YY) | Description |

PROJECT

11 AVENUE A
NEW YORK, NY 10009

RISER DIAGRAMS, SCHEDULES

| | | |
|------------------|------------------|----------|
| SEAL & SIGNATURE | DATE (MM.DD.YY): | 02.06.17 |
| | DRAWN BY: | K.N. |
| | CHK BY: | B.L. |
| | DWG. No.: | M-006.00 |
| | CAD FILE No.: | 12 OF 13 |

DOB BIS #: